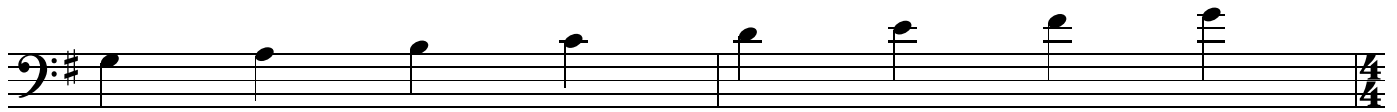


G SIGHT-READING + RHYTHM EXERCISES

Level 1

Bass Clef Instruments - Upper Octave - "G" Scale



All of the following exercises utilize notes from the key of concert "G".
The eighth rest is worth 1/2 of a beat, making it equivalent to an eighth note.

An eighth rest can be notated with either a NUMBER or a "+" sign
depending on where it lands in the measure.

In all of these exercises, the "eighth rest" will be ON the beat,
so it should be notated with a number, placed above the note.

In all of these exercises, the eighth rest will always be followed by a single eighth note,
which will be labeled with a "+" sign.

3 **A**

1 2 + + 2 + +

7 **B**

11 **C**

15 **D**

19 **E**

23 **F**